

Supporting art in the community, in the schools, and artists in art activities
Post Office Box 2623, Petaluma CA 94953 ... 707-793-2113

Petaluma Arts Association April NEWSLETTER 2011

Regular Meeting, Tuesday, April 5, Petaluma Art Center, Lakeville Hwy.

Business Meeting 7 pm

The Board will meet the same evening at 6 o'clock. The regular meeting will start at 7, followed by a coffee break. The Programs will start at 8 o'clock. Enter on Washington Street, across from the Longs shopping complex, at the driveway for the Visitors Center. That will be a right turn driving east, or a left turn driving west. (Exit only on D Street)

Program: 8pm ... Charles Pyle, Oil Painting



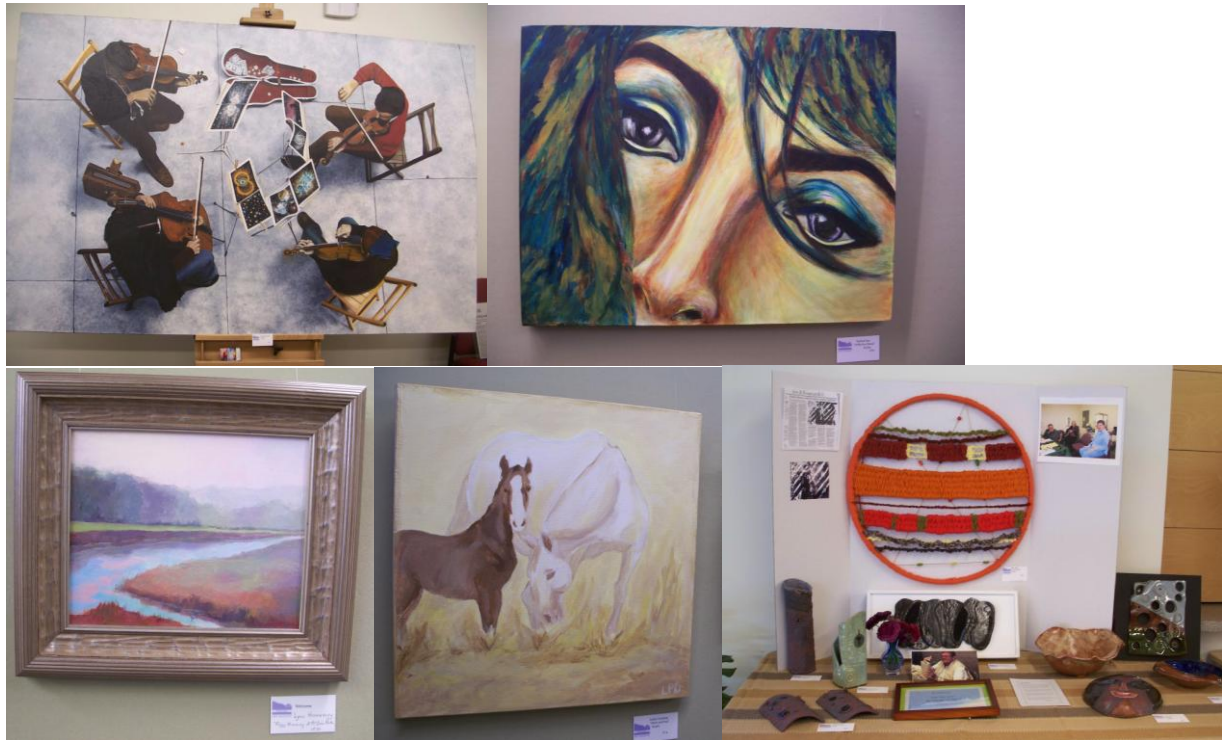
Charles Pyle, popular oil painter in Northern California will be our featured artist.

Program Notes: The program in March by Emily Dvorin took "Basketry" to a different level. Plastic "ties" became part of hairy containers. Buttons, chop sticks, and colored telephone wires all became something new. Seeing how artists express themselves in original ways often with unusual materials has made each program new and stimulating. The quality of our programs is well worth our membership dues. Invite a friend to the programs.

Thank you to Donna von Edelkrantz, Program Chairman and her committee for bringing a year of great programs to us. If you have suggestions that you think would be beneficial to our group or goals, please let us know by providing a written suggestion to one of our Board members or send an e-mail to paaboard@petalumaarts.org, or contact Donna at donnavone@comcast.Net, or phone Donna, 778-0580

PAA is a member supported organization. Participation by the membership is an essential part of PAA. The more you share your time and talents, the more you gain from your membership. The March meeting was dedicated to welcoming new members. Several guests were introduced, and refreshments were served.

Reports: Library Show was well attended. The Reception, co-sponsored by the Friends of the Library was exceptional. Fifty three artists displayed work. Richard Standard was the featured artist. Several pieces were sold and Tracy Bigelow Grisman, Chairman, and her committee did an outstanding great job. Thank you. Samples below:



A scholarship honoring Belu Jones has been established, Checks should be made out to PAA with a notation for Belu fund.

Following the Business part of the meeting, two members showed examples of art work they are currently doing. Elaine Larson, Collage and Susan Oshiro, fused glass.



Fused Glass Creations by Susan O'Shiro



Pretty Pink Profusion by Elaine Larson

ART IN THE PARK POSTER CONTEST

Mary Bales, chairman for Art in the Park, announced that applications for AIP will be in mail early in April. Membership dues must be current this year to qualify for the discounted entry fee.

Start NOW, June comes quicker than you think!! Entries for the poster art contest are due at the regularly scheduled June meeting.

Deadline, June 7, 2011 artwork to be brought to June meeting. We will vote on the entries at the meeting, so bring in your entries then.

Entered art must be created by member of PAA

Must include gazebo in Walnut park (all or part of)

May be landscape or portrait format

Will be reduced to postcard size (5x7)

Contact Virginia Stevens-Johnson for any questions
phone (home)766-8714 (cell) 849-8479 .

Tips and Ideas to share.

If you have any suggestions or art related news items please send it to news@petalumaarts.org or to Pat Marshall, 763-2308. The due date for Newsletter articles will normally be the first Wednesday after the Board Meeting. Pat Marshall is currently doing the newsletter, and requests help with writing two short articles for "Membership profiles"

FOR SALE- one 10 foot square canope cover. Exc condition. 80.00 Darold Graves 762-5044

For information or to contact the Board in 2011:

Board Members paaboard@petalumaarts.org

Community Outreach post@petalumaarts.org

Information info@petalumaarts.org

Web Site www.petalumaarts.org

Voicemail 707-793-2113

U.S. Mail P.O. Box 2623, Petaluma, CA 94953

President: Peggy Sebera psebera@comcast.net 707- 773-4933

Vice Pres: Sharon Donovan sjdonovan@yahoo.com 707- 782-1234

Treasurer: Elaine Larson Elainelars@sbcglobal.net 707-981-7944

Secretary: Susan Oshiro ssoshiro@comcast.net 707-765-194